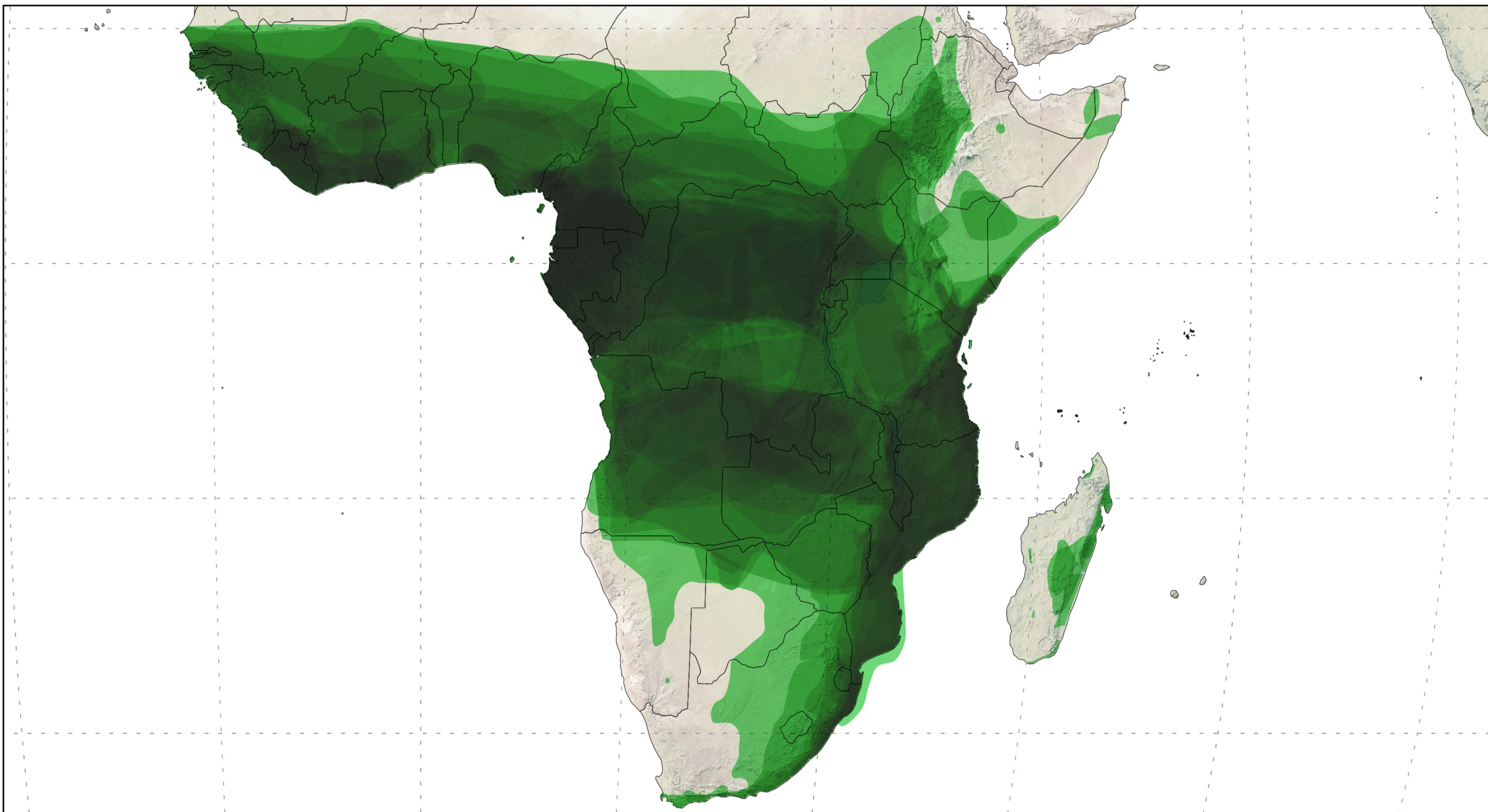


FAMILY HYPEROLIIDAE



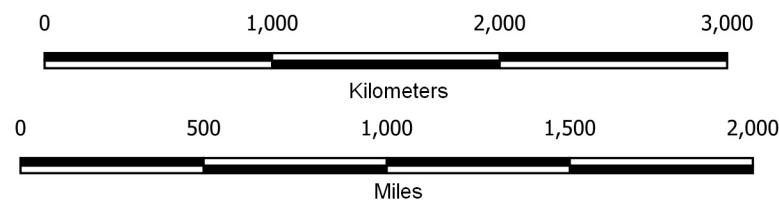
**Mapped by AmphibiaWeb,
January 2021**

223 species ranges showing, with
overlapping areas increasing in
darkness.

*Graticules at 30 degrees on world range,
and 15 degrees on inset.*

Projection is World Robinson, WGS84
(EPSG: 54030)

Data Sources: Natural Earth, AmphibiaWeb,
IUCN Red List



*Disclaimer: Species ranges may be missing, incomplete, or inaccurate
and are produced with best available data and thus subject to change.*

