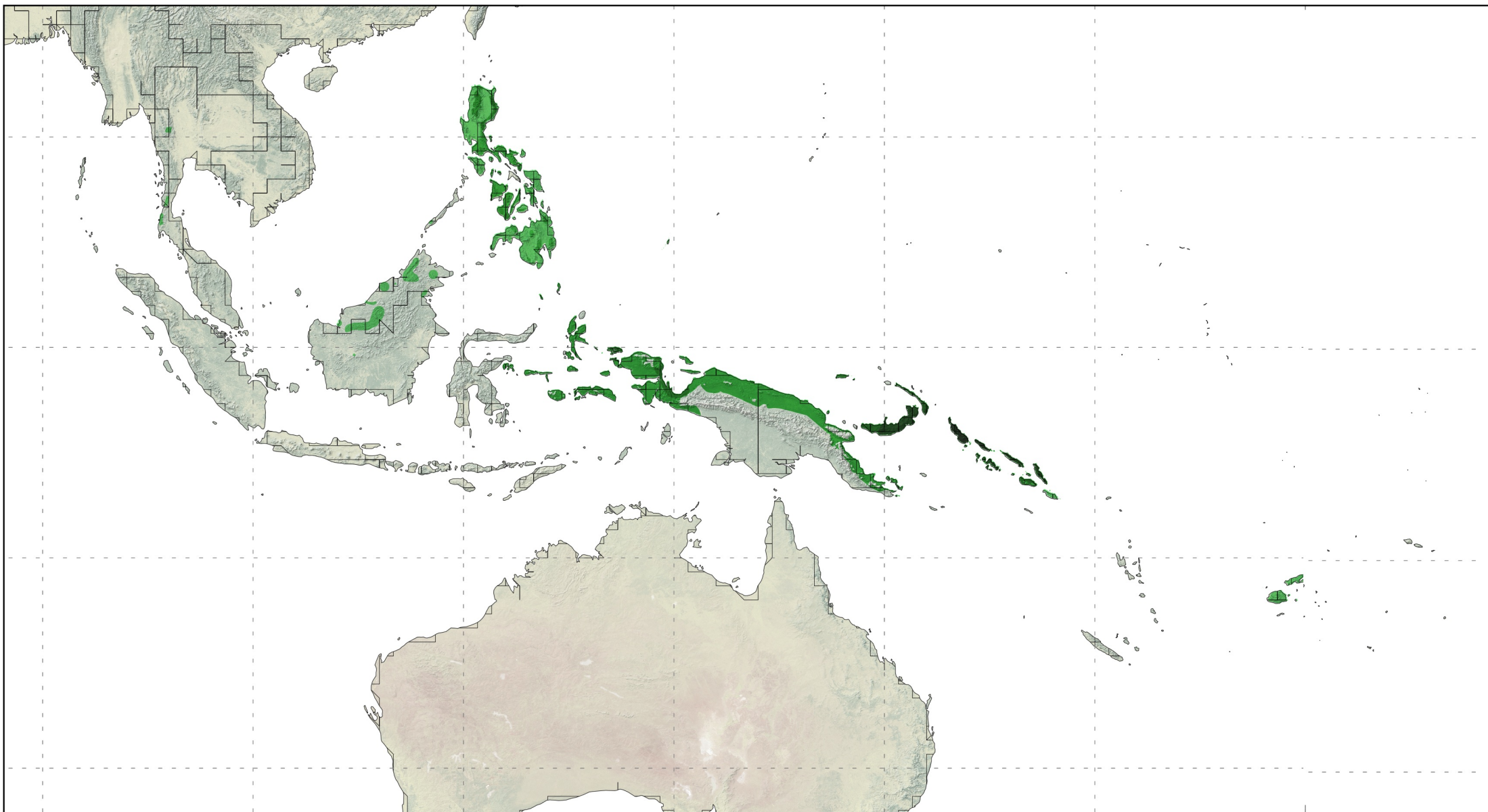


FAMILY CERATOBATRACHIDAE



Mapped by AmphibiaWeb,
December 2020

101 species ranges showing, with
overlapping areas increasing in
darkness.

Graticules at 30 degrees on world range,
and 15 degrees on inset.

Projection is World Robinson, WGS84
(EPSG: 4326)

Data Sources: Natural Earth, AmphibiaWeb,
IUCN Red List

0 1,000 2,000 3,000



Kilometers

0 400 800 1,200 1,600



Miles

*Disclaimer: Species ranges may be missing, incomplete, or inaccurate
and are produced with best available data and thus subject to change.*

