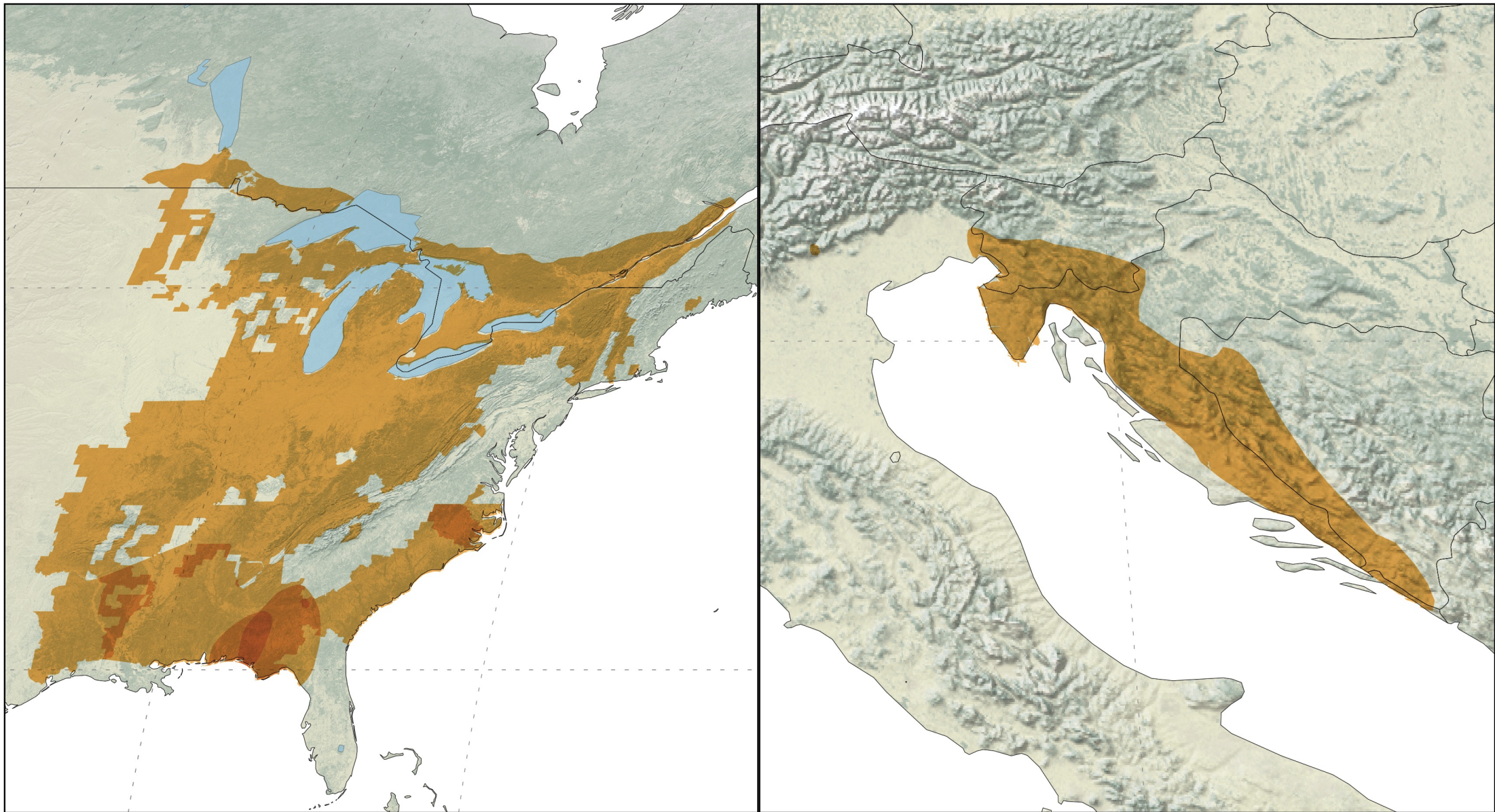


FAMILY PROTEIDAE



Mapped by AmphibiaWeb,
July 2021

8 species ranges showing, with
overlapping areas increasing in
darkness.

Graticules at 30 degrees on world range,
and 15 degrees on inset.

Projection is World Robinson, WGS84
(EPSG: 54030)

Data Sources: Natural Earth, AmphibiaWeb,
IUCN Red List

0 300 600 900



Kilometers

0 100 200 300 400



Miles

0 80 160 240



Kilometers

0 30 60 90 120



Miles

*Disclaimer: Species ranges may be missing, incomplete, or inaccurate
and are produced with best available data and thus subject to change.*

