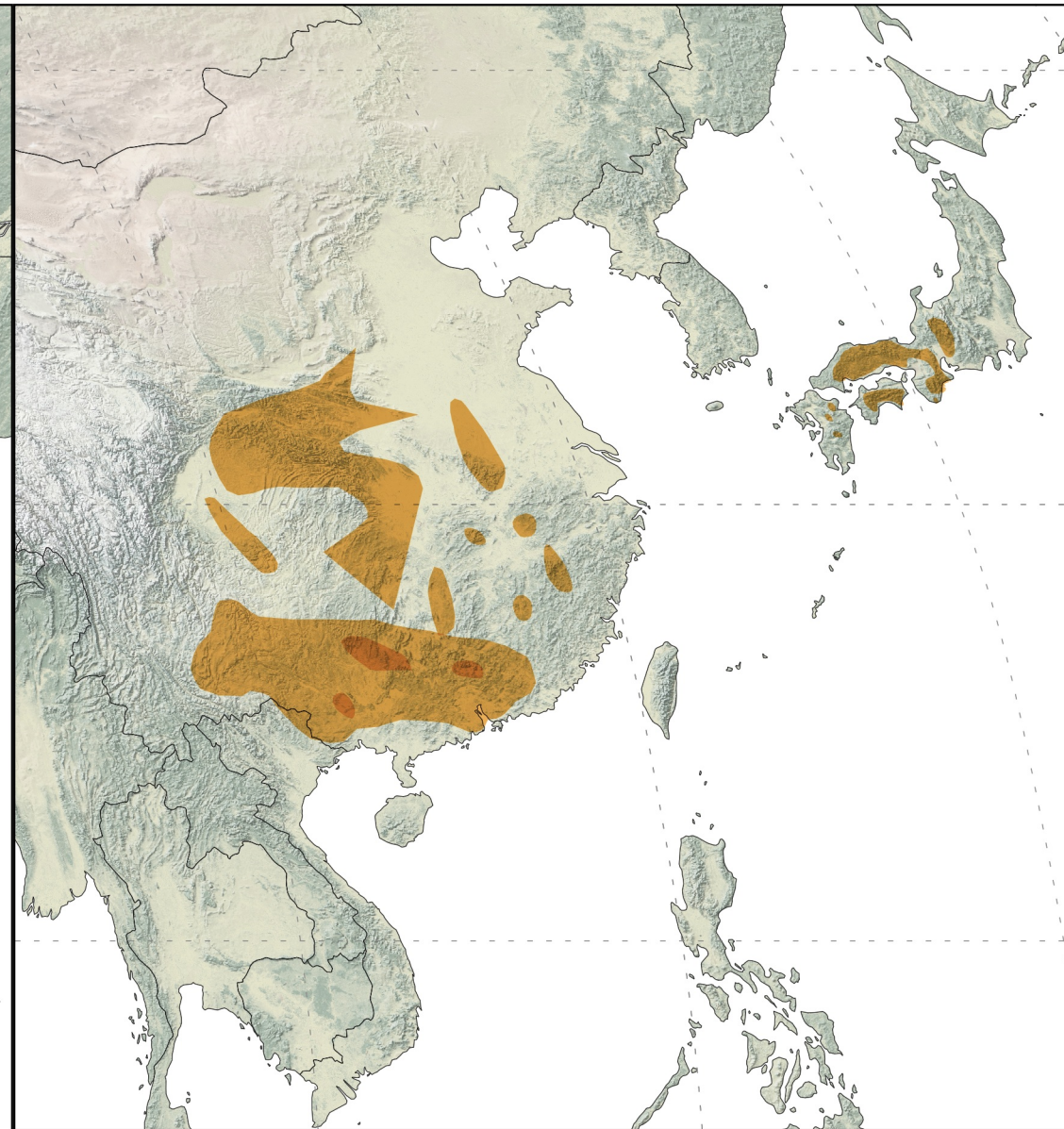
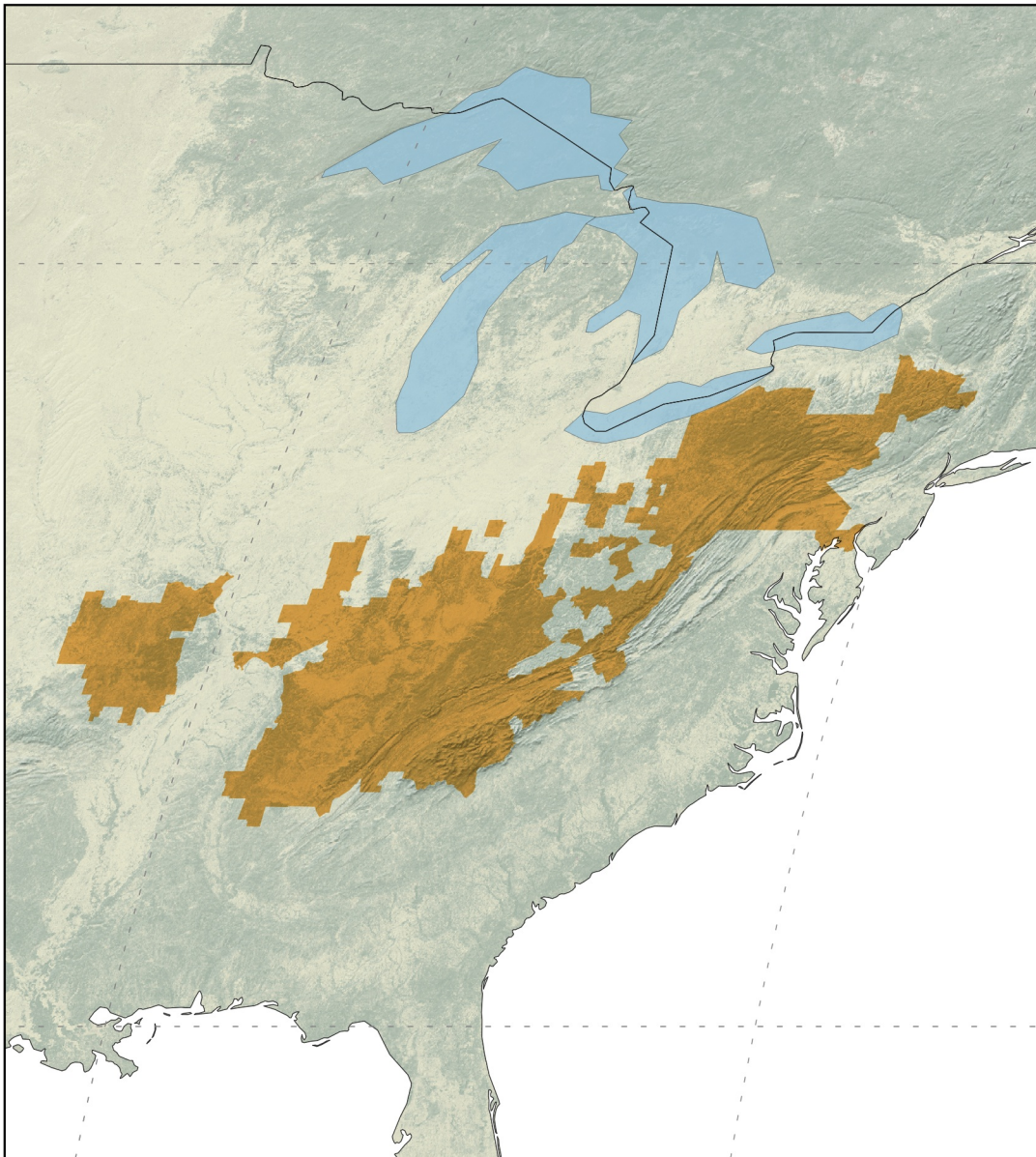


# FAMILY CRYPTOBRANCHIDAE



Mapped by AmphibiaWeb,  
January 2021

4 species ranges showing, with  
overlapping areas increasing in  
darkness.

Graticules at 30 degrees on world range,  
and 15 degrees on inset.

Projection is World Robinson, WGS84  
(EPSG: 54030)

Data Sources: Natural Earth, AmphibiaWeb,  
IUCN Red List

0 200 400 600



Kilometers

0 100 200 300 400



Miles

0 500 1,000 1,500



Kilometers

0 200 400 600 800



Miles

*Disclaimer: Species ranges may be missing, incomplete, or inaccurate  
and are produced with best available data and thus subject to change.*

